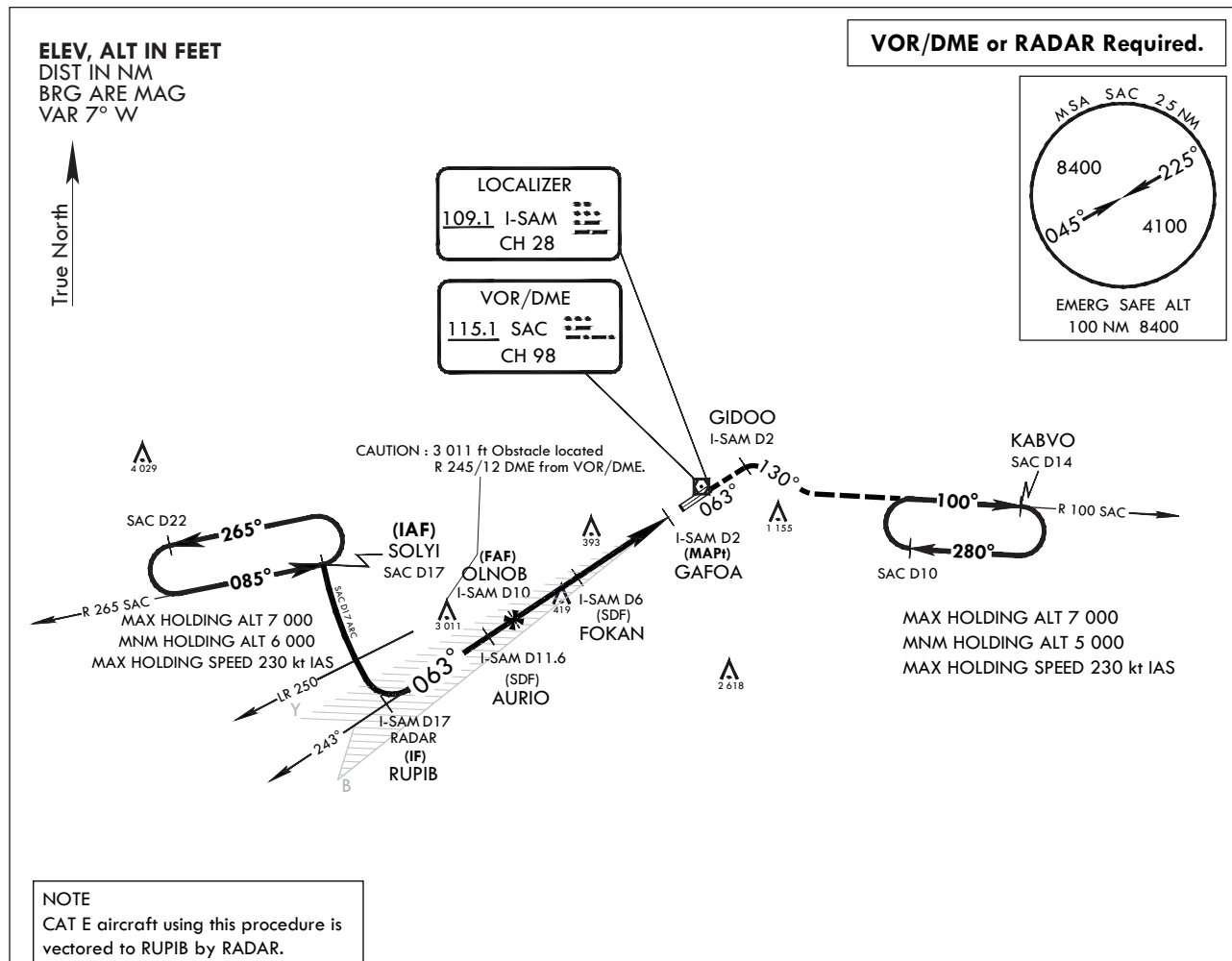


**INSTRUMENT  
APPROACH  
CHART**

AERODROME ELEV 25 ft  
HEIGHTS RELATED TO  
HIGHEST ELEV TDZ 17 ft

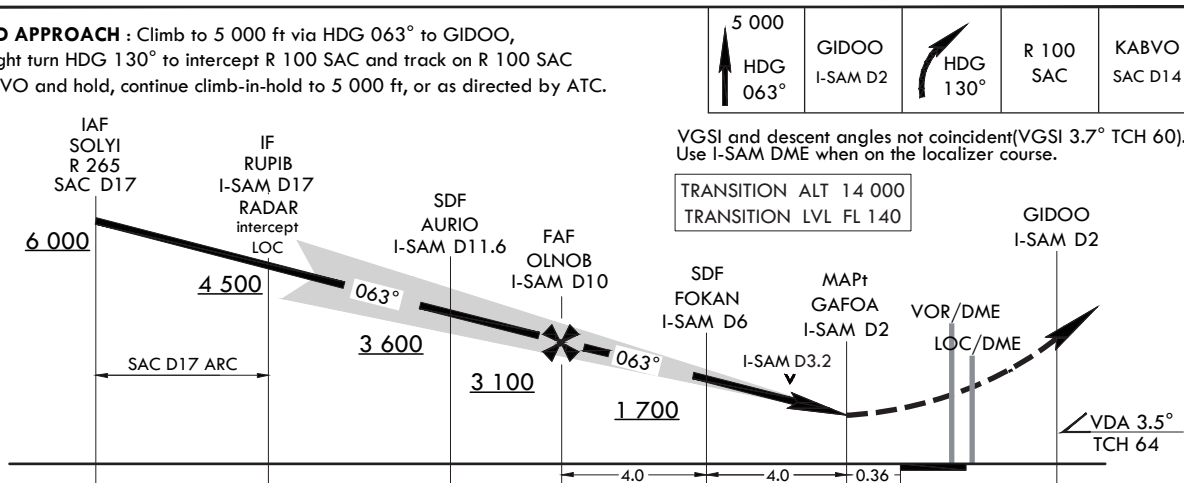
SACHEON APP 135.4 344.7  
SACHEON TWR 118.675 236.6  
305.4

**SACHEON/Sacheon(RKPS)**  
**LOC/DME**  
**RWY 06L**



**NOT TO SCALE**

**MISSED APPROACH :** Climb to 5 000 ft via HDG 063° to GIDOO, then right turn HDG 130° to intercept R 100 SAC and track on R 100 SAC to KABVO and hold, continue climb-in-hold to 5 000 ft, or as directed by ATC.



CATEGORY	A	B	C	D	E
S-LOC 06L*	700/40	683(700-¾)	700-1½	683(700-1½)	
CIRCLING **	800-1 775(800-1)	900-1¼ 875(900-1¼)	1 000-3	975(1 000-3)	1 120-3 1 095(1 100-3)

\* When ALS INOP, increase CAT AB RVR to 55 and VIS to 1 mile, CAT CDE VIS to 2 miles.  
\*\* Circling is not authorized SE of RWY 06/24.

Change : Information of OBST ELEV(3 028 ft → 3 011 ft).

INTENTIONALLY

LEFT

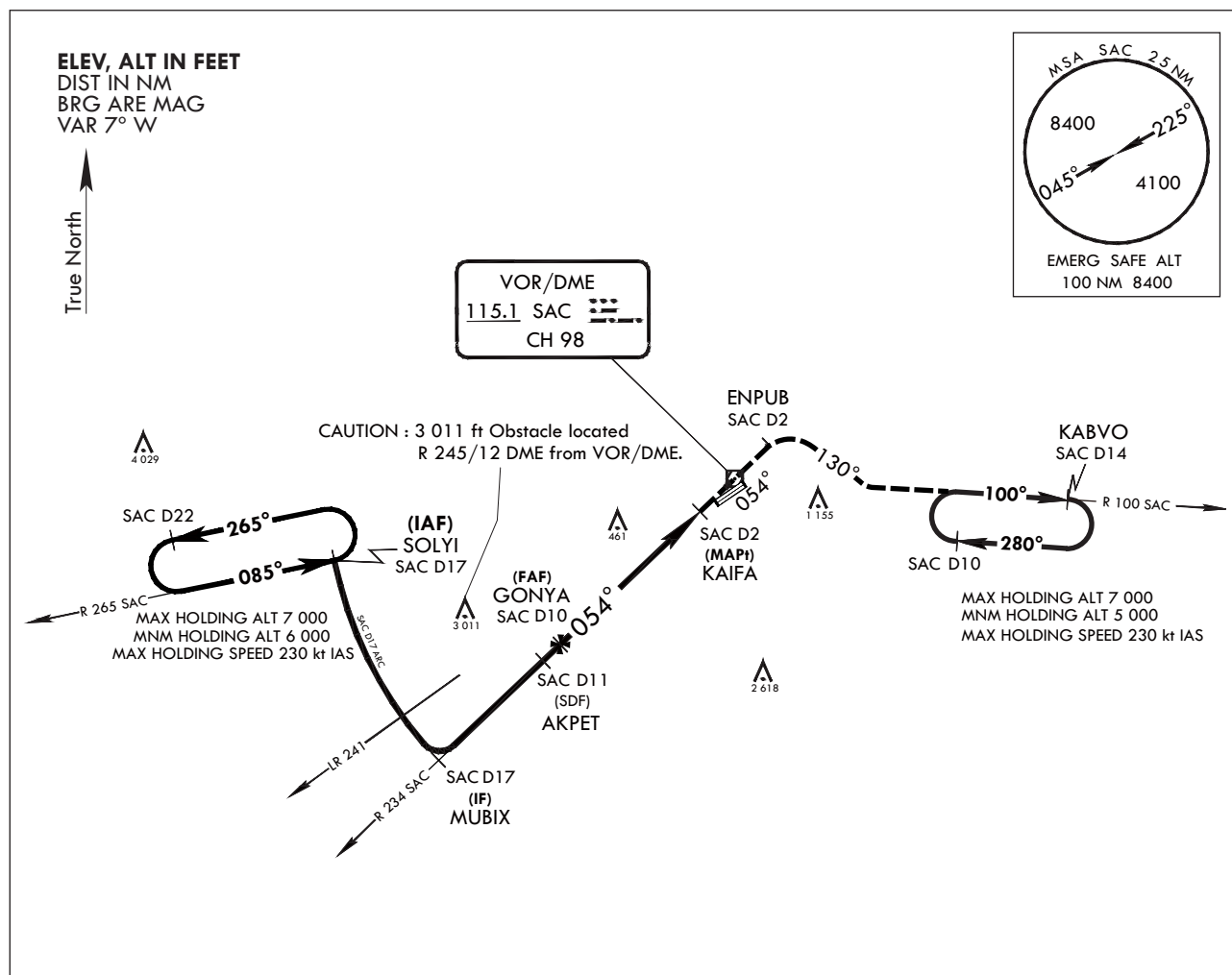
BLANK

**INSTRUMENT  
APPROACH  
CHART**

AERODROME ELEV 25 ft  
HEIGHTS RELATED TO  
HIGHEST ELEV TDZ 17 ft

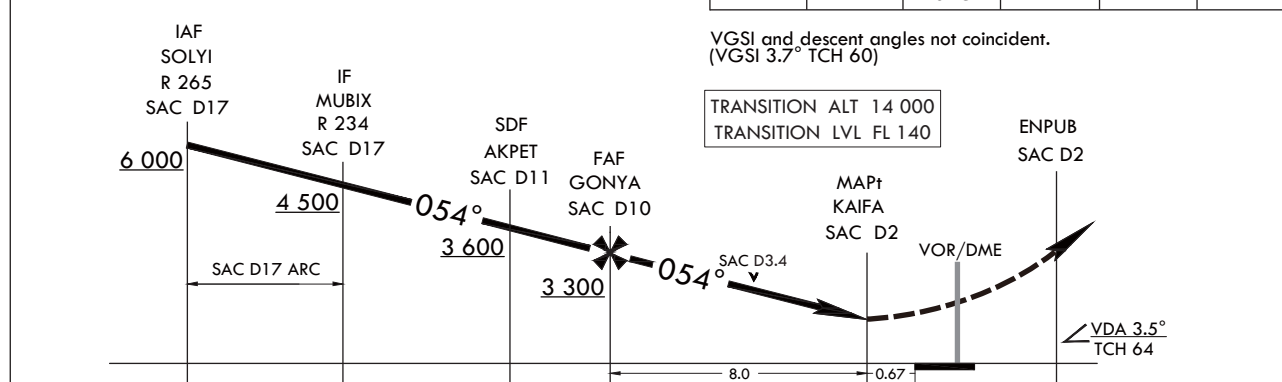
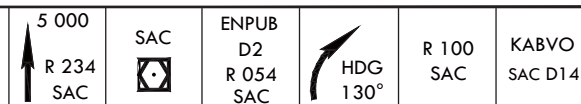
SACHEON APP 135.4 344.7  
SACHEON TWR 118.675 236.6  
305.4

**SACHEON/Sacheon(RKPS)**  
**VOR/DME**  
**RWY 06L**



**NOT TO SCALE**

**MISSED APPROACH :** Climb to 5 000 ft via track on R 234 SAC to SAC over and track on R 054 SAC to ENPUB, HDG 130° to intercept R 100 SAC and track on R 100 SAC to KABVO and hold, continue climb-in-hold to 5 000 ft.



CATEGORY	A	B	C	D
S-VOR 06L*	880/45	863(900-7/8)	880-2	863(900-2)
CIRCLING**	880-1 1/4 855(900-1 1/4)	900-1 1/4 875(900-1 1/4)	1 000-3	975(1 000-3)

\* When ALS INOP, increase CAT A RVR to 55 and VIS to 1 mile, CAT B RVR to 60 and VIS to 1 1/4 miles, CAT CD VIS to 2 1/2 miles.

\*\* Circling is not authorized SE of RWY 06/24.

Change : Information of OBST ELEV(3 028 ft → 3 011 ft).

INTENTIONALLY

LEFT

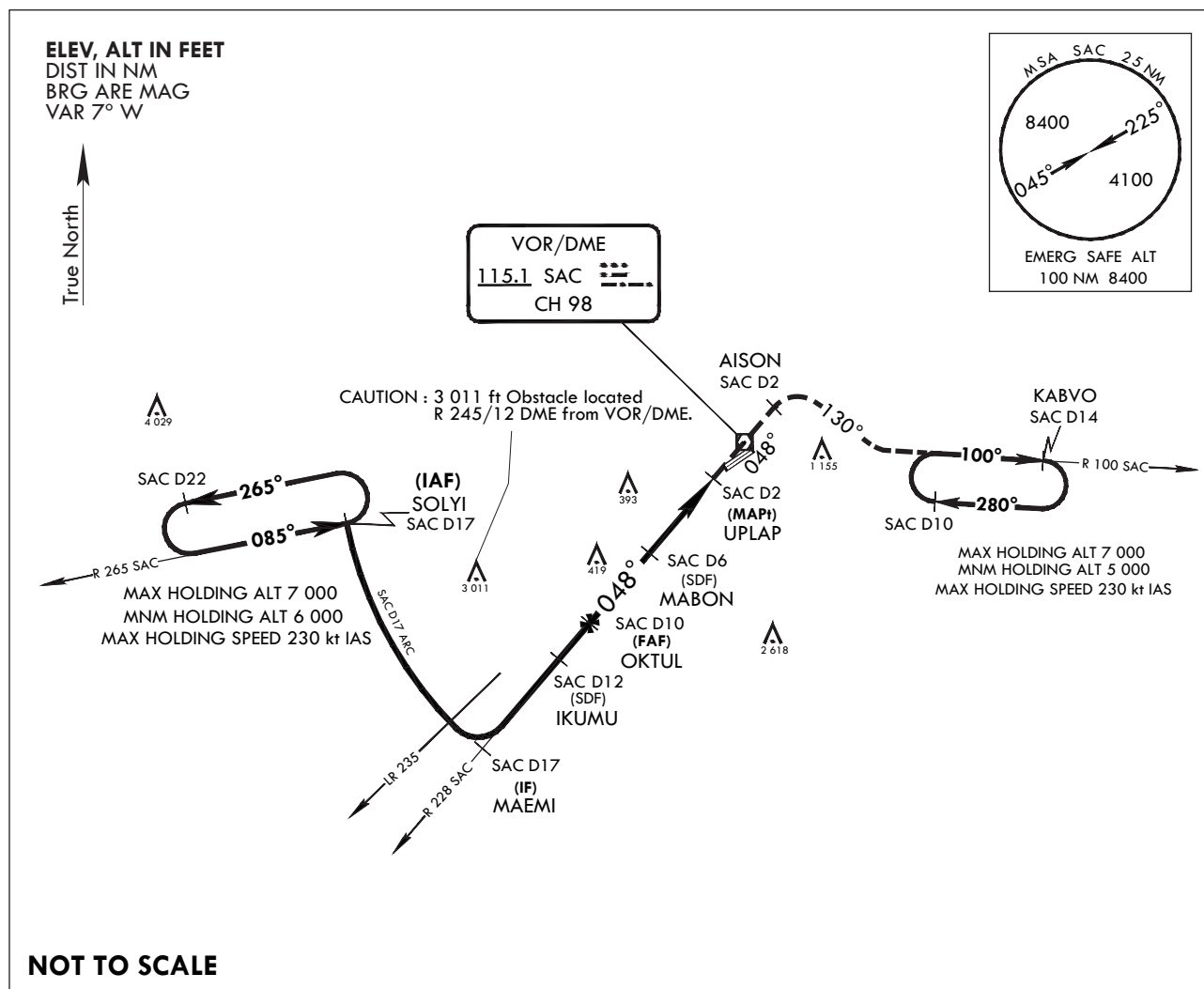
BLANK

**INSTRUMENT  
APPROACH  
CHART**

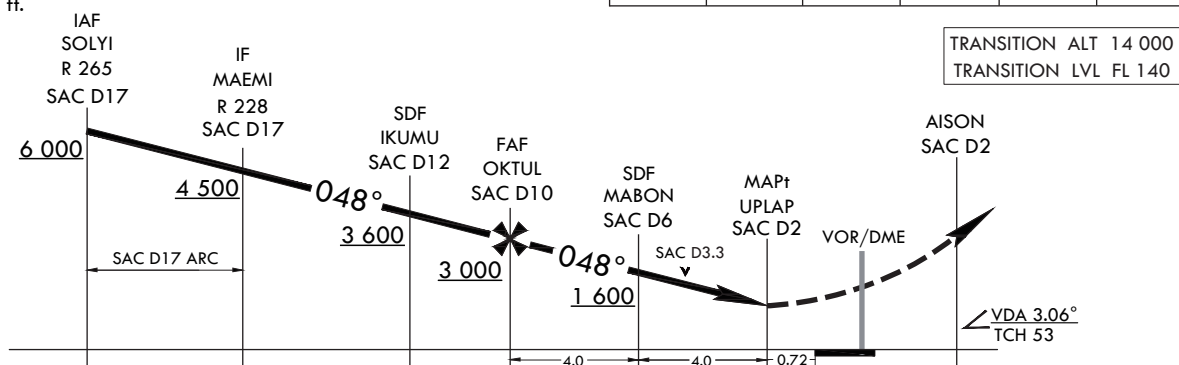
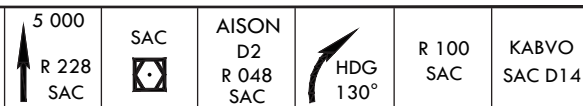
AERODROME ELEV 25 ft  
HEIGHTS RELATED TO  
HIGHEST ELEV TDZ 19 ft

SACHEON APP 135.4 344.7  
SACHEON TWR 118.675 236.6  
305.4

**SACHEON/Sacheon(RKPS)**  
**VOR/DME**  
**RWY 06R**



**MISSED APPROACH :** Climb to 5 000 ft via track on R 228 SAC to SAC over and track on R 048 SAC to AISON, then right turn HDG 130° to intercept R 100 SAC and track on R 100 SAC to KABVO and hold, continue climb-in-hold to 5 000 ft.



CATEGORY	A	B	C	D
S-VOR 06R*	700/45	681(700-7/8)	700-1½	681(700-1½)
CIRCLING**	800-1 755(800-1)	900-1¼ 875(900-1¼)	1 000-3	975(1 000-3)

\* When ALS INOP, increase CAT AB RVR to 55 and VIS to 1 mile, CAT CD VIS to 2 miles.

\*\* Circling is not authorized SE of RWY 06/24.

Change : Information of OBST ELEV(3 028 ft → 3 011 ft).

**INTENTIONALLY**

**LEFT**

**BLANK**

**INSTRUMENT  
APPROACH  
CHART**

AERODROME ELEV 25 ft  
HEIGHTS RELATED TO  
HIGHEST ELEV TDZ 24 ft

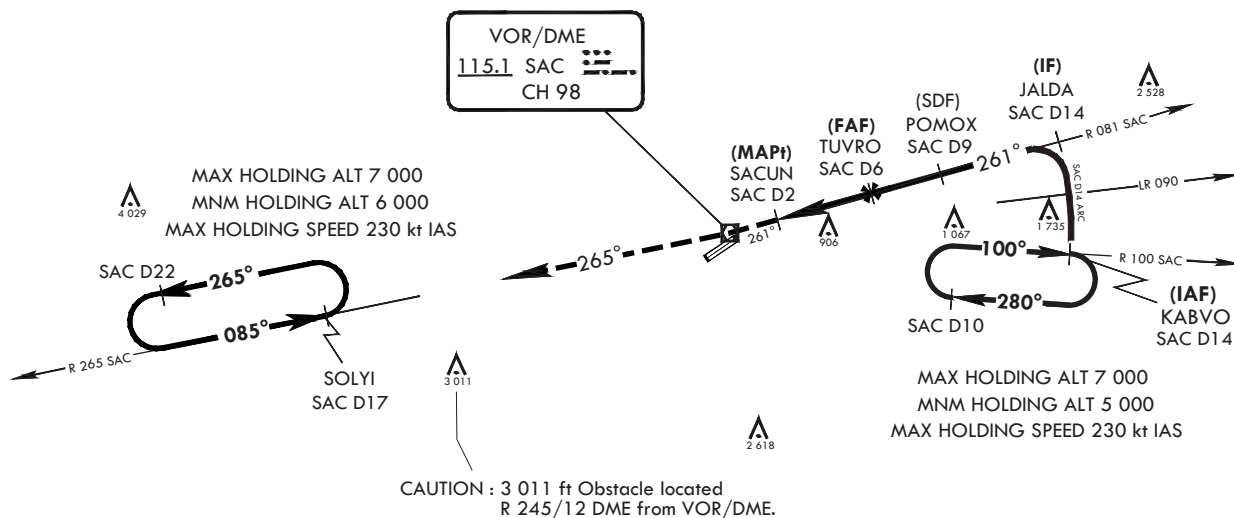
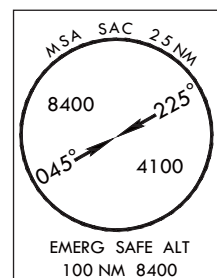
SACHEON APP 135.4 344.7  
SACHEON TWR 118.675 236.6  
305.4

**SACHEON/Sacheon(RKPS)**  
**VOR/DME**  
**RWY 24L**

Note : Approach and circling-to-land under U.S.TERPS

**ELEV, ALT IN FEET**  
**DIST IN NM**  
**BRG ARE MAG**  
**VAR 7° W**

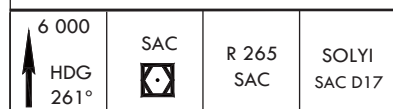
True North



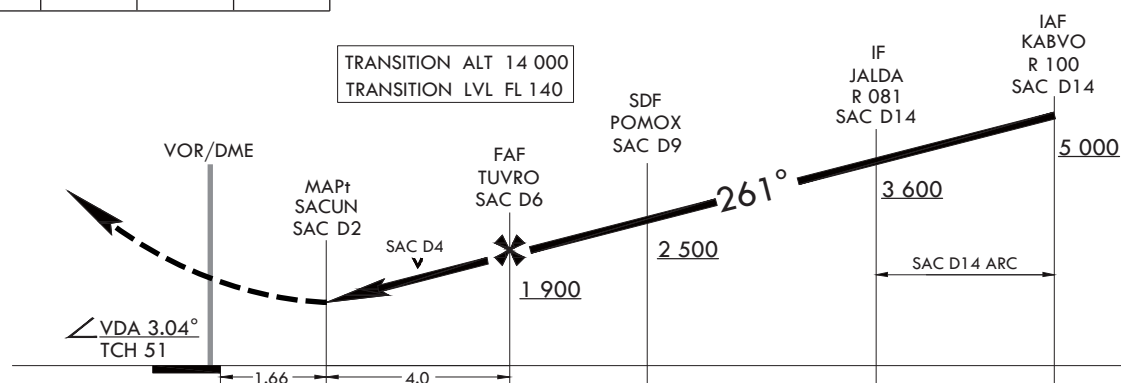
Missed approach obstacle minimum climb rate table

Knots	60	120	180	240	30	TO
V/V(fpm)	210	420	630	830	1 040	4 000

**NOT TO SCALE**



**MISSSED APPROACH :** Climb to 6 000 ft via HDG 261° to SAC then track outbound R 265 SAC to SOLYI(R 265 SAC/D17) and hold, continue climb-in-hold to 6 000 ft.



CATEGORY	A	B	C	D
S-VOR 24L	1 220-2	1 196(1 200-2)	1 220-3	1 196(1 200-3)
CIRCLING *	1 220-2	1 195(1 200-2)	1 220-3	1 195(1 200-3)

\* Circling is not authorized SE of RWY 24/06.

Change : Information of OBST ELEV(3 028 ft → 3 011 ft).

**INTENTIONALLY**

**LEFT**

**BLANK**

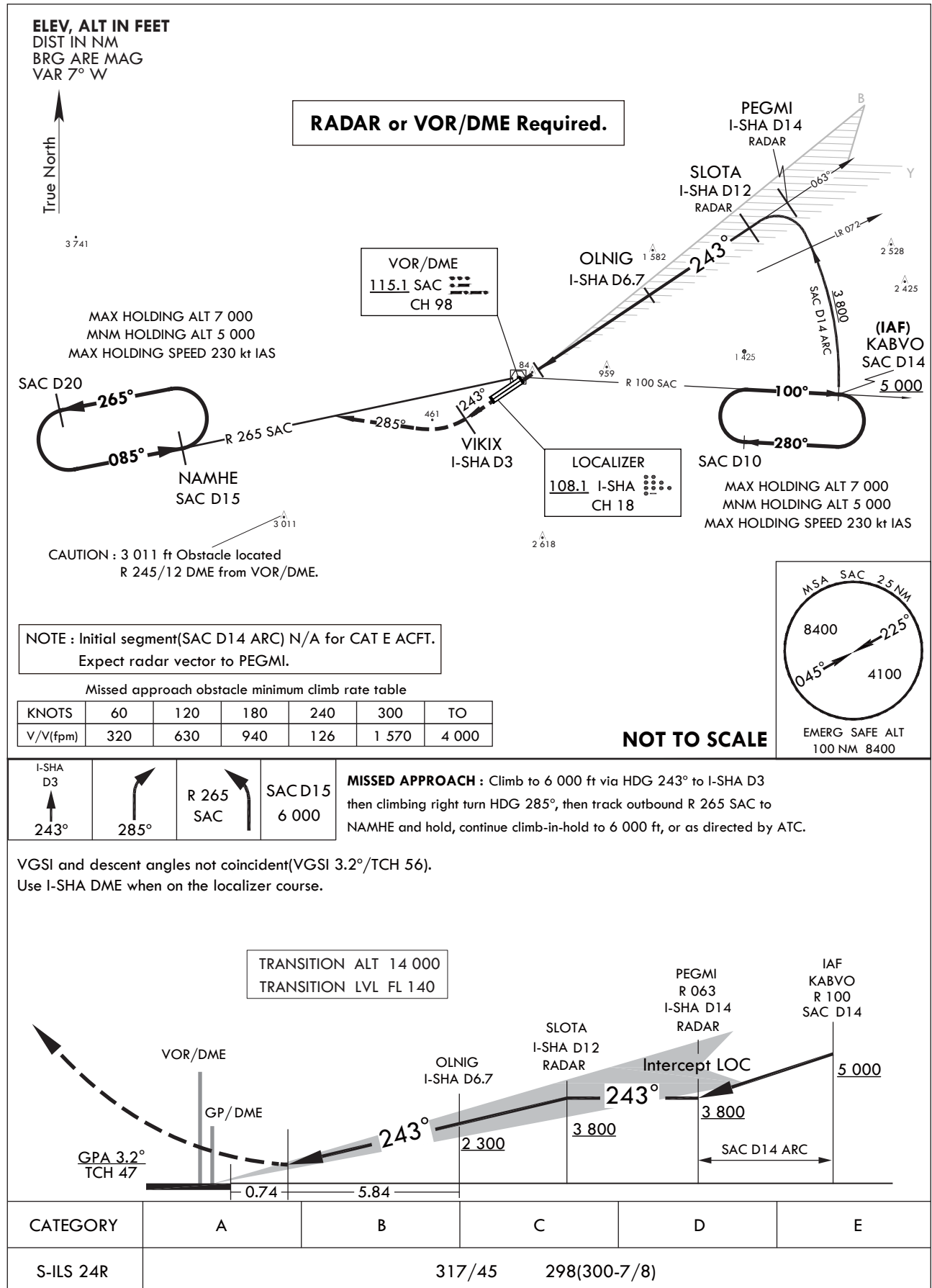


**INSTRUMENT  
APPROACH  
CHART**

AERODROME ELEV **25** ft  
HEIGHTS RELATED TO  
HIGHEST ELEV TDZ **19** ft

SACHEON APP 135.4 344.7  
SACHEON TWR 118.675 236.6  
305.4

**SACHEON/Sacheon(RKPS)**  
**ILS**  
**RWY 24R**



Change : Information of OBST ELEV(3 028 ft → 3 011 ft).

**INTENTIONALLY**

**LEFT**

**BLANK**

## CHART



Note : Approach and circling-to-land under U.S.TERPS

AERODROME ELEV **25** ft  
HEIGHTS RELATED TO  
HIGHEST ELEV TDZ **19** ft

SACHEON APP	135.4	344.7
SACHEON TWR	118.675	236.6
	305.4	

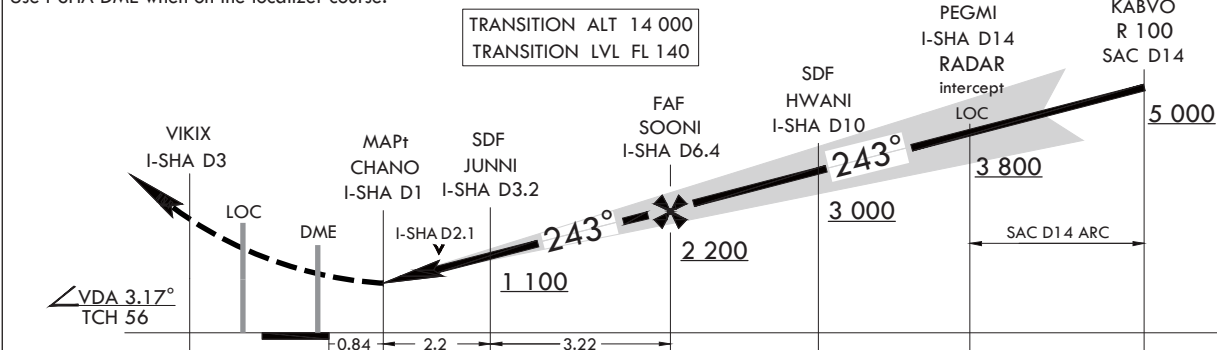
RWY 24R



 6 000 HDG 243°	VIKIX I-SHA D3	 HDG 285°	R 265 SAC	SOLYI SAC D17
--	-------------------	---	--------------	------------------

**MISSED APPROACH :** Climb to 6 000 ft via HDG 243° to I-SHA D3 and right turn HDG 285° and track outbound R 265 SAC to SOLYI(R 265 SAC/D17) and hold, continue climb-in-hold to 6 000 ft. or as directed ATC.

Use L-SHA DMF when on the localizer course.



CATEGORY	A	B	C	D	E
S-LOC 24R	740/55	721(800-1)	740-2	721(800-2)	
CIRCLING *	840-1¼ 815(900-1¼)	880-1¼ 855(900-1¼)	1 000-3 975(1 000-3)	1 020-3 995(1 000-3)	1 120-3 1 095(1 100-3)

\* Circling is not authorized SE of RWY 24/06.

INTENTIONALLY

LEFT

BLANK

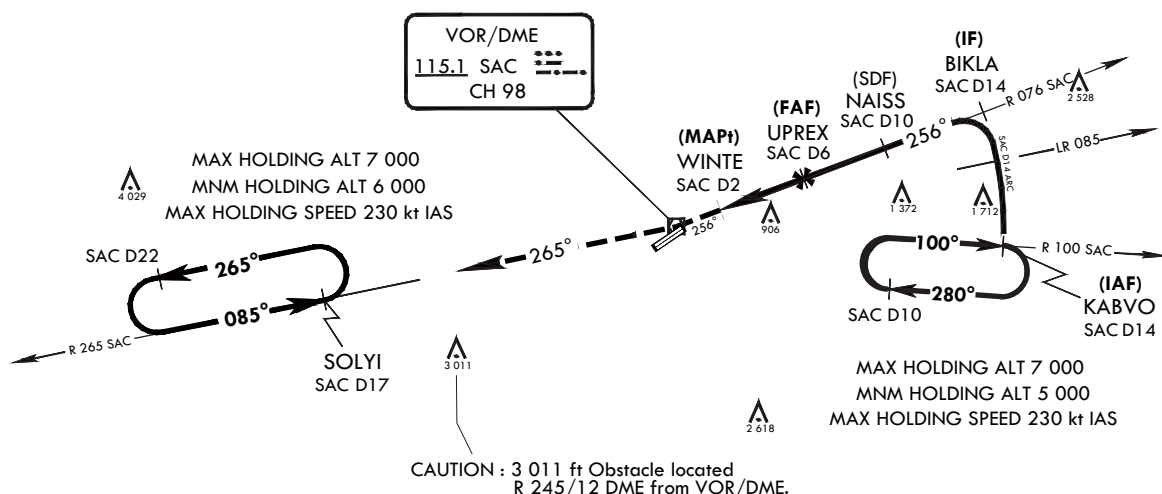
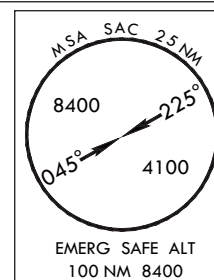
**INSTRUMENT  
APPROACH  
CHART**

AERODROME ELEV **25** ft  
HEIGHTS RELATED TO  
HIGHEST ELEV TDZ **19** ft

SACHEON APP 135.4 344.7  
SACHEON TWR 118.675 236.6  
305.4

**SACHEON/Sacheon(RKPS)**  
**VOR/DME**  
**RWY 24R**

**ELEV, ALT IN FEET**  
DIST IN NM  
BRG ARE MAG  
VAR 7° W

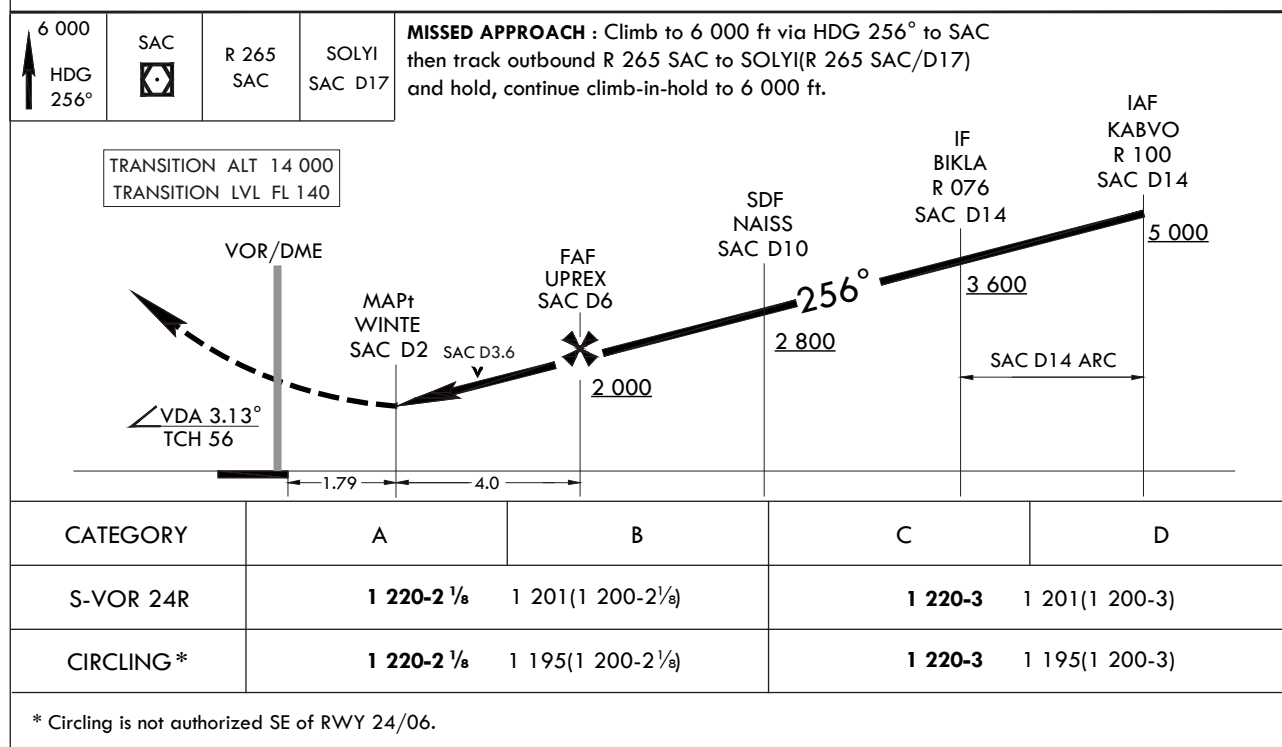


NOTE : RWY 24R, ALS not install.

Missed approach obstacle minimum climb rate table

KNOTS	60	120	180	240	300	TO
V/V(fpm)	210	420	630	830	1 040	4 000

**NOT TO SCALE**



Change : Information of OBST ELEV(3 028 ft → 3 011 ft).

INTENTIONALLY

LEFT

BLANK